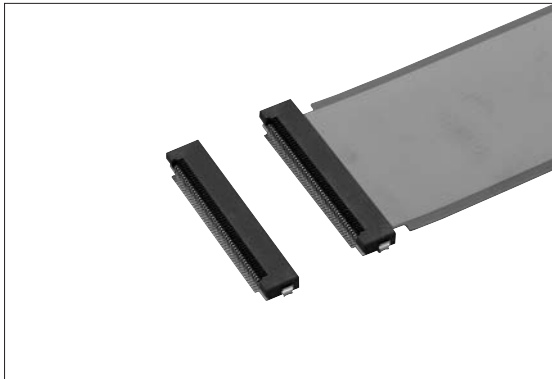


FPC Connectors

EF-5D Series 0.5mm Pitch, For Shield FPC (SMT)



Features

- Compatible with high-speed serial transmission such as LVDS and TMDS (HDMI), same performance as micro coaxial.
 - Differential impedance matches 100Ω.
 - Double-faced FPCs are used and strengthened the signal and ground layers. An EMI Solution is taken by having the connector featuring our original double-contact structure cause the FPC ground layer to contact. The signal side can be tailored to any pin assignment.
 - Our original front flip lock structure ensures multi pins products of high level contact reliability.
 - The structure which relieves the load from the cover when the FPC is locked will prevent detachment or breakage of the cover.
 - There are no restrictions to the direction in which the FPC can be laid.
 - By turning the cover, an FPC can be connected easily with only a small force.
 - Mechanisms for prevention of disconnection and top-for-bottom reversal insertion of an FPC are provided.
 - Low profile 2.5mm (8, 20, 30P) and 2.8mm (40, 50P) height when mounted.
 - Both upper and lower contact design.
 - Using the ZIF structure.
 - Supplied in the embossed taping with automatic mounter.
- *Please contact us about vertical type.

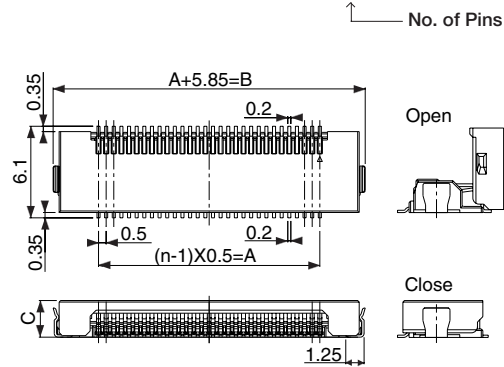
Specification

- Rating: 0.5A, 50V AC/DC
- Contact Resistance: 30mΩ max., initially
- Insulation Resistance: 100MΩ min. at 100V DC
- Withstanding Voltage: 100V AC (for one minute)
- Operating Temperature Range: -40°C to +85°C

Material and Plating

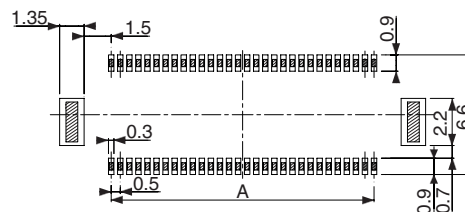
- Housing : Thermoplastic Resin, Natural Color, 94V-0
- Cover : Thermoplastic Resin, Black, 94V-0
- Contact : Cu Alloy, Au Plating
- Hold down : Cu Alloy, Sn Alloy Plating

Right Angle Type CFP87 -0101F

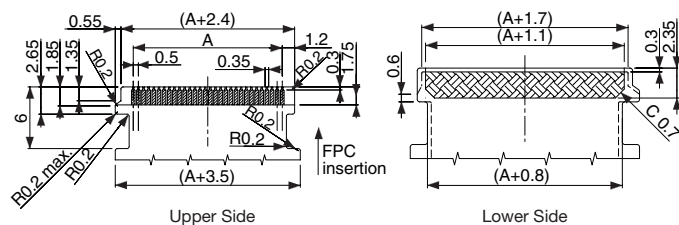


No. of Pins	A	B	C
08	3.5	9.35	2.5
20	9.5	15.35	2.5
30	14.5	20.35	2.5
40	19.5	25.35	2.8
50	24.5	30.35	2.8

P.C. Board Dimension



Applicable FPC Dimension (t=0.15±0.03)



- FPC plating to recommend : Au plating