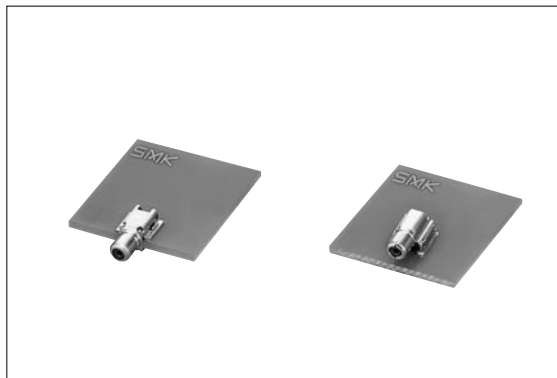


RF Coaxial Connectors with Switch (SMT), TS-9B Series <4GHz>



■ Features

1. Coaxial connector with switch of right-angle type, that can be connected to an external circuit.
2. The operating frequency ranges extensively from DC to 4GHz with good RF performance.
3. Receptacles are available on-board type and mid-mount type.
4. The compatible plug is our TS-9P series, and this plug can be used with either the TS-9A or B series.
5. Mating of the plug and receptacle is a half-locking structure with positive click feeling.
6. Embossed taping for automatic mounter.

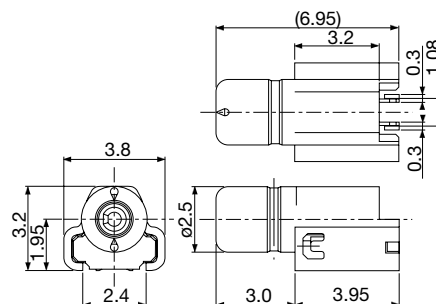
■ Specification

1. Rating : 100V AC/DC
2. Frequency Range : DC to 4GHz
3. Nominal Impedance : 50Ω
4. V. S. W. R. : 1.3 max. (DC to 1GHz)
(normal close) 1.4 max. (1 to 3GHz), 1.6 max. (3 to 4GHz)
5. Insertion Loss : 0.2dB max. (DC to 1GHz)
(normal close) 0.3dB max. (1 to 3GHz), 0.6dB max. (3 to 4GHz)
6. Operating Temperature Range : -25°C to +85°C
7. Mating Life : 5,000 cycles

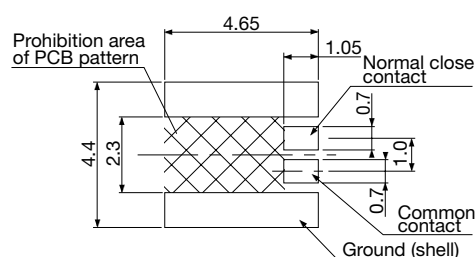
■ Material and Plating (Receptacle)

- Housing : Thermoplastic Resin
- Contact : Cu Alloy, Au Plating

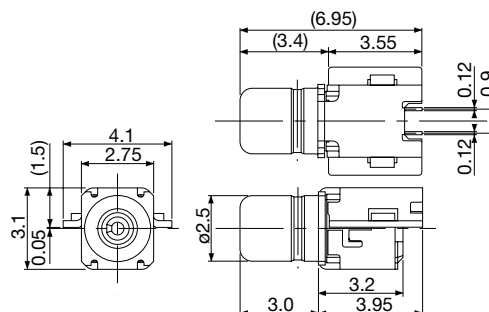
● Receptacle CRS5001-5701F (On Board Type)



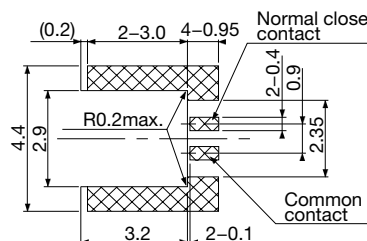
■ P.C. Board Dimension



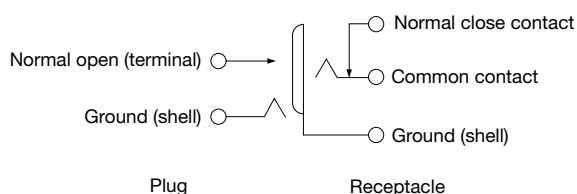
● Receptacle CRS5001-5001F (Mid Mount Type)



■ P.C. Board Dimension



■ Coaxial Switch Circuit



■ **Note**
2,500pcs/reel