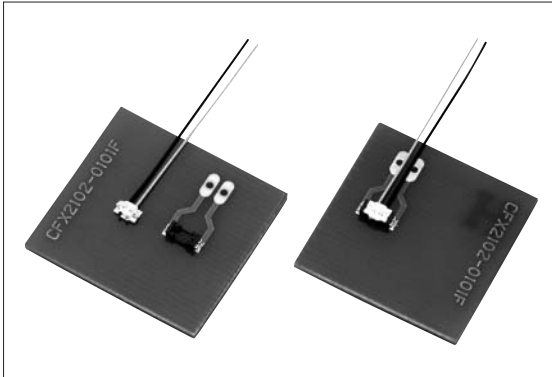


## 2P Wire to Board Connectors



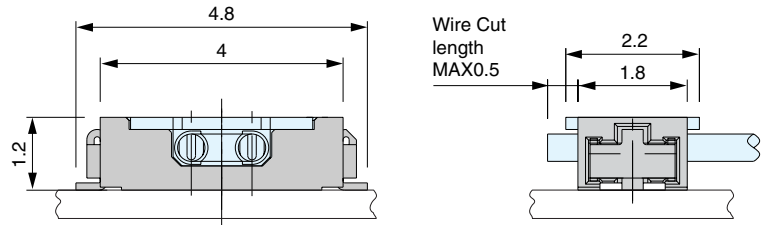
### ■ Features

1. A low-profile 2P wire-to-board connector of 1.0 mm pitch and mating height of 1.2 mm.
2. Resistant to vibration and shocks when dropped and highly reliable due to a 2-point contact structure.
3. Excellent cable retention performance and contact reliability due to double pressure-connected cables at anteroposterior positions.
4. Excellent in addition to ensured positive clicking feeling during insertion or withdrawal due to the locking structure.
5. A reverse insertion prevention design.

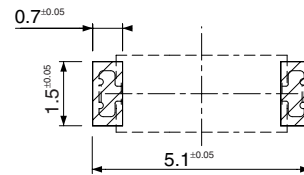
### ■ Specification

1. Cable pitch : 1 mm
2. Rating : 1A, 30V AC/DC
3. Contact Resistance : 20m  $\Omega$  max., initially
4. Insulation Resistance: 100M  $\Omega$  min. at 250V DC
5. Withstanding Voltage : 250V AC (for one minute)
6. Operating Temperature Range : -25°C to +85°C

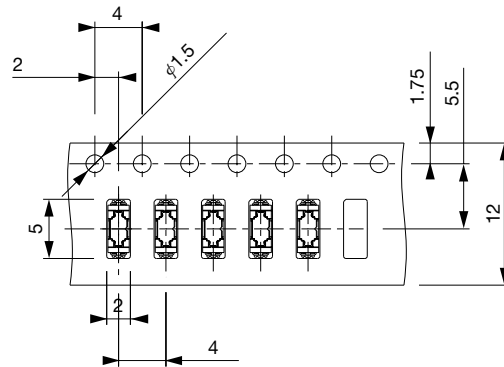
### ■ Mating Diagram



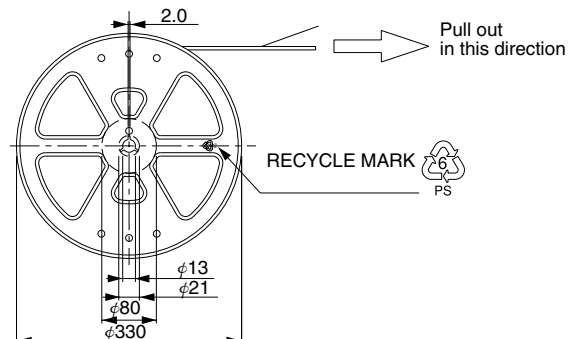
### ■ P.C. Board Dimension



### ■ Taping Dimension



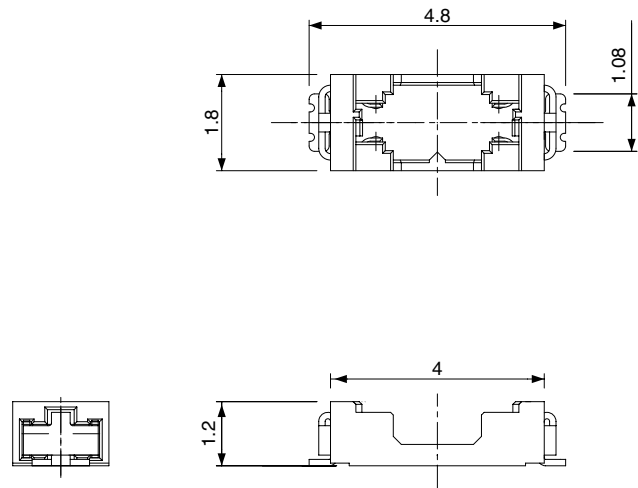
### ■ Reel Dimension



### ● Receptacle CFX2102-0201F

#### ■ Material and Plating

- Housing : Thermoplastic Resin, Black
- Contact : Cu Alloy, Sn Plating



### ● Plug CFX2302-0201F

#### ■ Material and Plating

- Housing : Thermoplastic Resin, White
- Contact : Cu Alloy, Sn Plating (Reflow Treatment)

