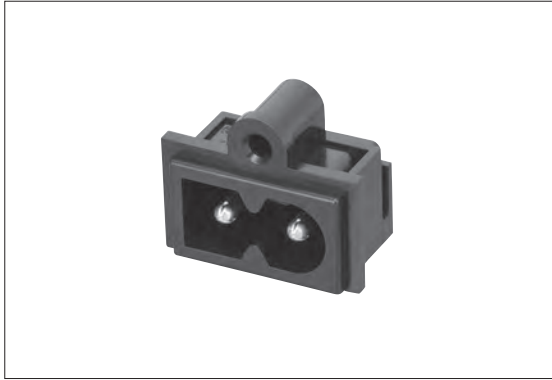


## Power Connectors

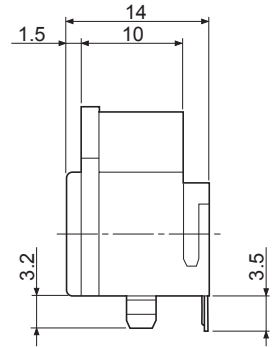
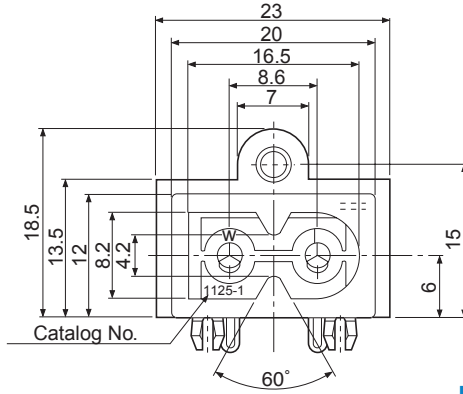


### CCT2302-1171F

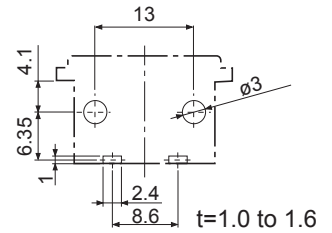
#### 2P Inlet (Polarized)

##### ■ Specification

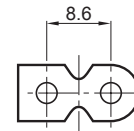
1. Rating : 2.5A, 250V AC / 7A, 125V AC
2. Insulation Resistance : 300MΩ min. at 500V DC
3. Withstanding Voltage : 2000V AC (for one minute)
4. Operating Temperature Range: -20°C to +60°C
5. Main Unit Material : Thermoplastic Resin, Black, 94V-0
6. Catalog No. : II25-1
7. International Standard : IEC60320-1, Standard sheet C8



##### ■ P.C. Board Dimension



##### ■ Applicable Plug



##### Approval Standards:

UL	NEMKO
CSA	FIMKO
SEMKO	VDE
DEMKO	CCC

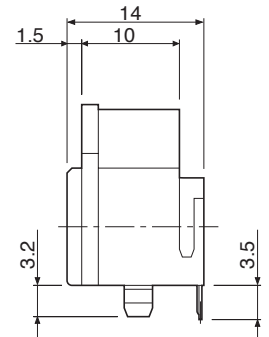
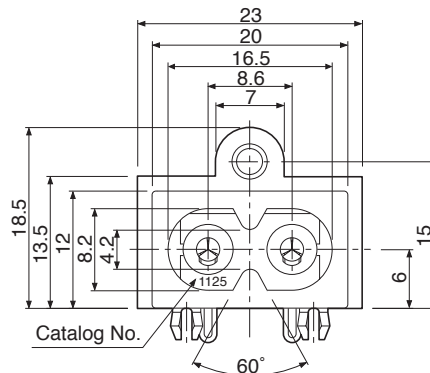


### CCT2302-1372F

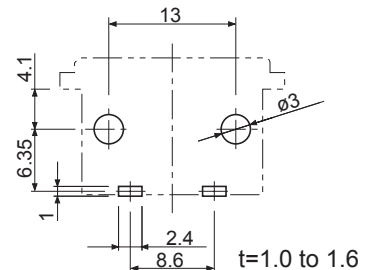
#### 2P Inlet (Non-polarized)

##### ■ Specification

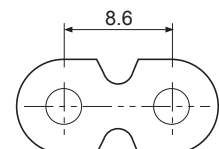
1. Rating : 2.5A, 250V AC / 7A, 125V AC
2. Insulation Resistance : 300MΩ min. at 500V DC
3. Withstanding Voltage : 2000V AC (for one minute)
4. Operating Temperature Range: -20°C to +60°C
5. Main Unit Material : Thermoplastic Resin, Black, 94V-0
6. Catalog No. : II25
7. International Standard : IEC60320-1, Standard sheet C8



##### ■ P.C. Board Dimension



##### ■ Applicable Plug



##### Approval Standards:

UL	NEMKO
CSA	FIMKO
SEMKO	VDE
DEMKO	CCC