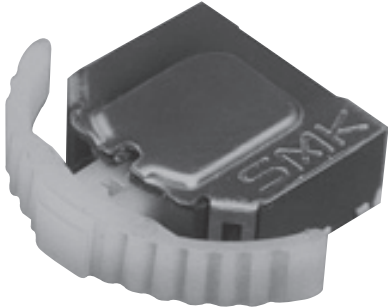


# Multifunctional Switches

## Lever Push Switches



- Rating : 10mA, 5V DC
- Operating Force : Rotation 1.4N  
Push 2.5N
- Circuit : Rotation SPDT  
Push SPST
- Operating Life : 100,000 cycles

**JLS1300-07**   **F**

<input type="checkbox"/> <input checked="" type="checkbox"/>	Lever Color	Packing
11	Gray	Taping
12	Black	

