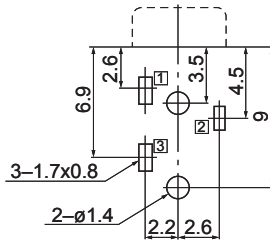
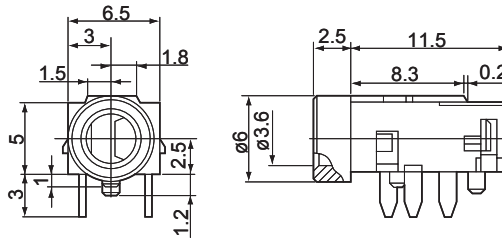


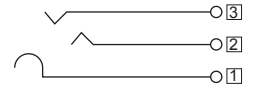
3.5mm Dia. Jacks

LGY2502-0200F



P.C. Board Dimension
取付基板参考図
(Bottom View)

Circuits / 回路



Flow Soldering
(Please contact about
soldering condition)
フローはんだ
(はんだ条件について、
ご相談ください。)
Manual Soldering
手はんだ

DIP Type

[t=1.2/1.6]

Mini Jacks