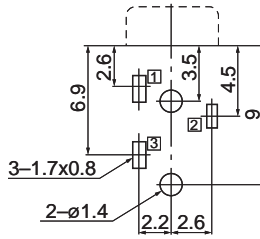
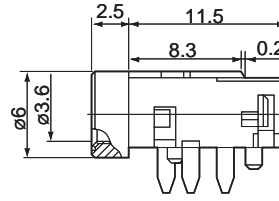
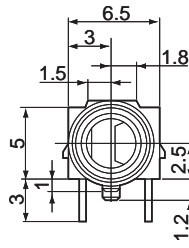


3.5mm Dia. Jacks

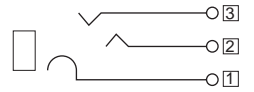
LGY2512-0100F



P.C. Board Dimension
取付基板参考図
(Bottom View)

[t=1.2/1.6]

Circuits / 回路



Flow Soldering
(Please contact about
soldering condition)

フローはんだ
(はんだ条件について、
ご相談ください。)

Manual Soldering
手はんだ

DIP Type