

RF Coaxial Connectors with Switch (SMT), TS-5 Series <2.5GHz>



■ Features

1. Coaxial connector with switch of right-angle type. Can be used to inspect and measure the high frequency properties of mobile communication equipment.
2. The operating frequency ranges extensively from DC to 2.5GHz with good RF performance.
3. Low profile and small of 2.8mm mounting height and 6.85mm depth.
4. Mating of the plug and receptacle is a half-locking structure with positive click feeling.
5. The receptacle is available in normal and reverse types and can be used for difference of the center pin. It can also be selected according to the PCB layout.
6. Embossed tapping for automatic mounter.

■ Specification

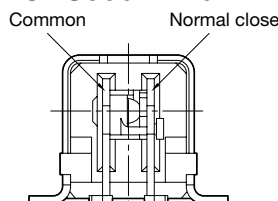
1. Rating : 100V AC / DC
2. Frequency Range : DC to 2.5GHz
3. Nominal Impedance : 50Ω
4. V.S.W.R.(normal close-open) : 1.2 max. (DC to 1GHz)
1.3 max. (1 to 2.5GHz)
5. Insertion Loss (normal close-open) : 0.15dB max. (DC to 1GHz)
0.3dB max. (1 to 2.5GHz)
6. Operating Temperature Range : -25°C to +85°C

■ Material and Plating (Receptacle)

- Housing : Thermoplastic Resin
- Contact : Cu Alloy, Selective Au Plating

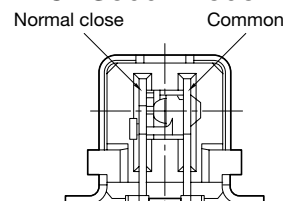
- Receptacle

CRS5001-1704F

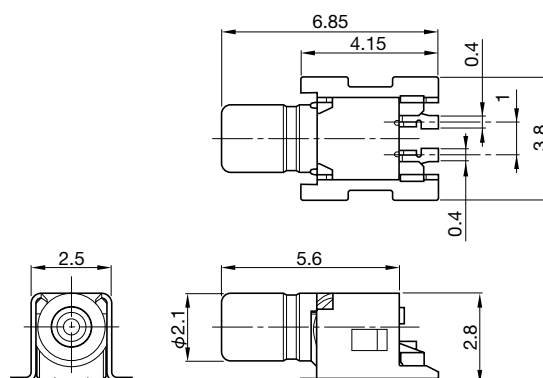


(Normal type / Type-A)

CRS5001-2303F



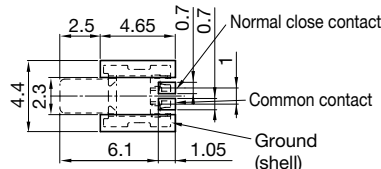
(Reverse type / Type-B)



■ P.C. Board Dimension

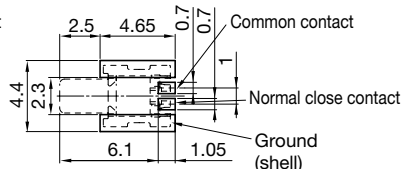
CRS5001-1704F

Type-A

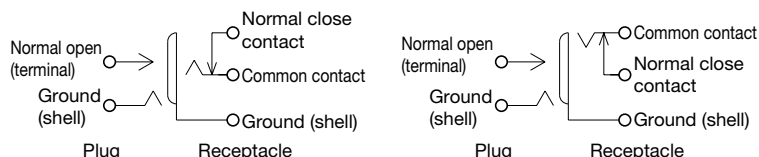


CRS5001-2303F

Type-B



■ Coaxial Switch Circuit



■ **Note**

3,000pcs/reel

- Plug

CRC9001-2401F

