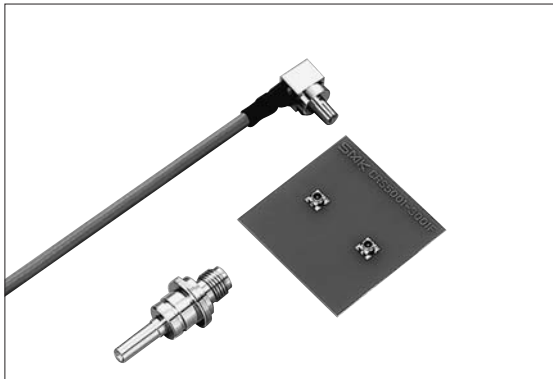


RF Coaxial Connectors with Switch (SMT), TS-7 Series <6GHz>



■ Features

1. DC to 6 GHz coaxial connector with switch.
2. Ultra small design as 1.5mm height, 2.9mmX 2.9mm mounting area and 0.025g mass.
3. Embossed taping with for automatic mounting.
4. Considered tilting mating with plug by increasing retention force.
5. Available for inspection plug.

■ Specification

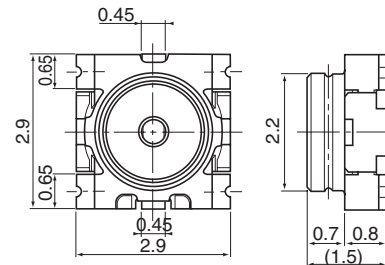
1. Rating : 100V/100V AC
2. Frequency Range : DC to 6GHz
3. Nominal Impedance : 50Ω
4. V. S. W. R. : 1.3 max. (DC to 3.0GHz)
1.5 max. (3.0 to 6.0GHz)
5. Insertion Loss : 0.15dB max. (DC to 3.0GHz)
0.20dB max. (3.0 to 6.0GHz)
6. Operating Temperature Range : -25°C to +85°C

■ Material and Plating (Receptacle)

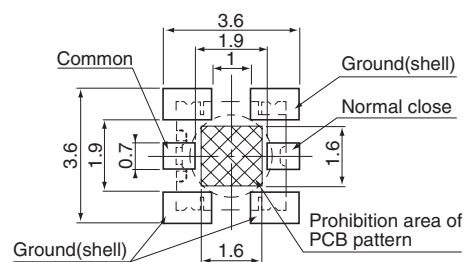
- Housing : Thermoplastic Resin
- Contact : Cu Alloy, Au Plating

- Receptacle

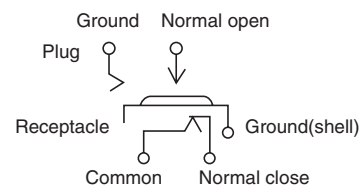
CRS5001-3001F



■ P.C. Board Dimension



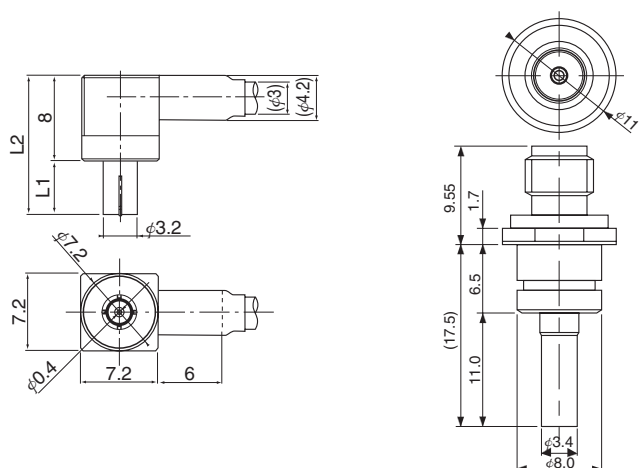
■ Coaxial Switch Circuit



- Plug

CRC9001-39□□F
(Mating Type)

CRC9001-4001F
(Probe Type)



| □□ | L1 | L2 | Note |
|----|----|------|----------|
| 01 | 5 | (13) | – |
| 02 | 10 | (18) | Standard |