

## Mini Jacks

### 3.5mm Dia. Jack : JK-35 Series

#### ■ Features

1. It is a small jack with a diameter of 3.5 mm.
2. A wide selection is available including SMD, DIP and Mid Mount types.

#### ■ Specifications

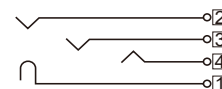
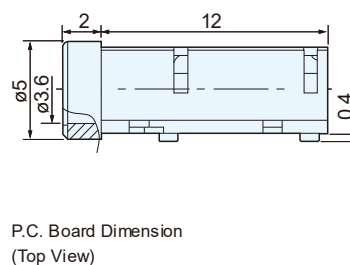
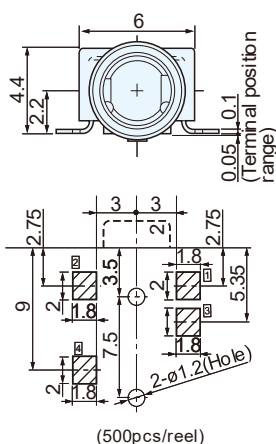
- Applicable Plug Diameter :  $\phi 3.5\text{mm}$
- Number of Poles : 3, 4
- Mounting Method : SMD Type, DIP Type, Mid Mount Type
- Rating : 12V DC, 1A
- Contact Resistance : 30m $\Omega$  max., 50m $\Omega$  max (Depends on product part number)
- Insulation Resistance : 100M $\Omega$  min. at 500V DC
- Withstanding Voltage : 500V AC (for one minute)



**LGY2209-0101F**

SMD Type

Circuit



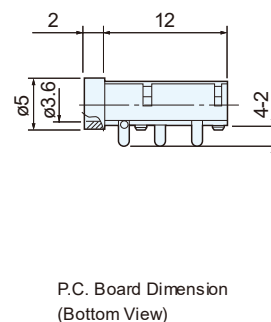
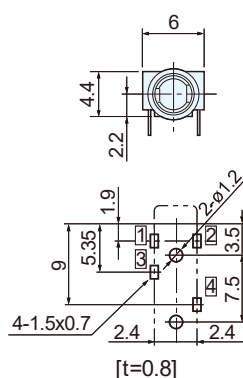
Reflow Soldering



**LGY2209-0300F**

DIP Type

Circuit



Manual Soldering

# Mini Jacks

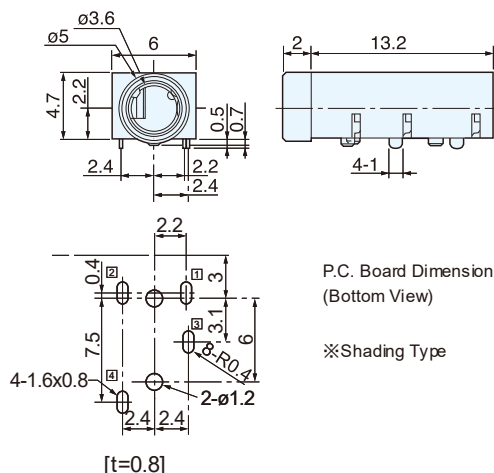
## 3.5mm Dia. Jack : JK-35 Series



**LGY2209-0801F**

DIP Type

Circuit

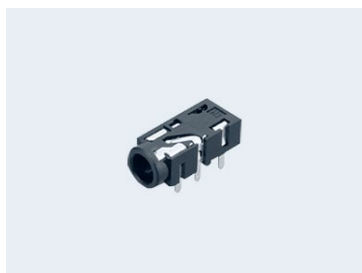


P.C. Board Dimension  
(Bottom View)

※Shading Type



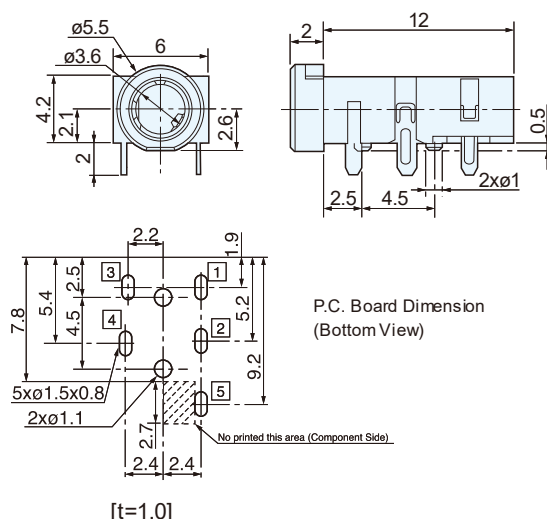
Reflow Soldering  
Manual Soldering



**LGY2109-0200F**

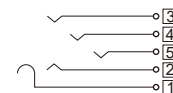
DIP Type

Circuit



P.C. Board Dimension  
(Bottom View)

No printed this area (Component Side)



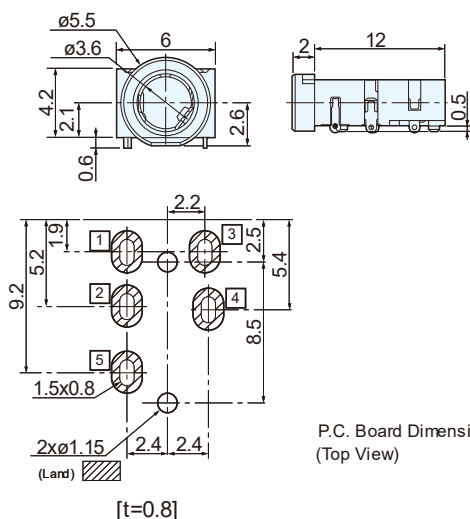
Manual Soldering



**LGY2109-1701F**

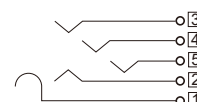
DIP Type

Circuit



P.C. Board Dimension  
(Top View)

(Land)



Reflow Soldering  
Manual Soldering

# Mini Jacks

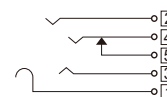
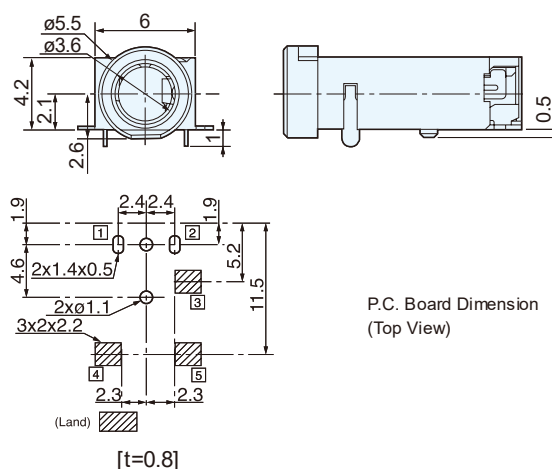
## 3.5mm Dia. Jack : JK-35 Series



**LGY2109-3301F**

DIP/SMD Type

Circuit



Reflow Soldering

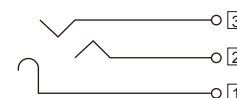
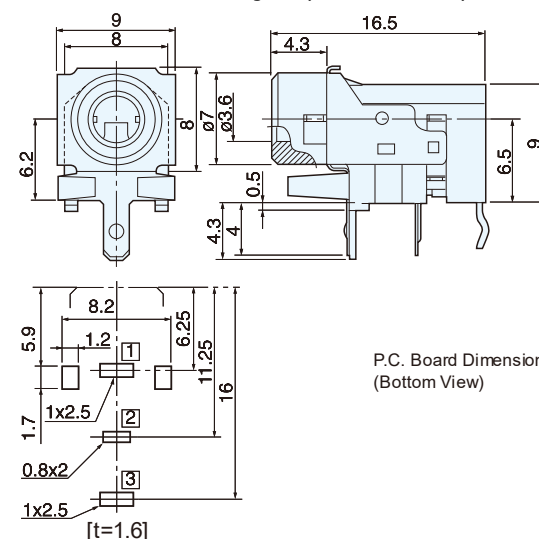


**LGY6502-0800F**

DIP Type

Circuit

Noise-Resistant Designed (With Earth Plate)



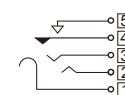
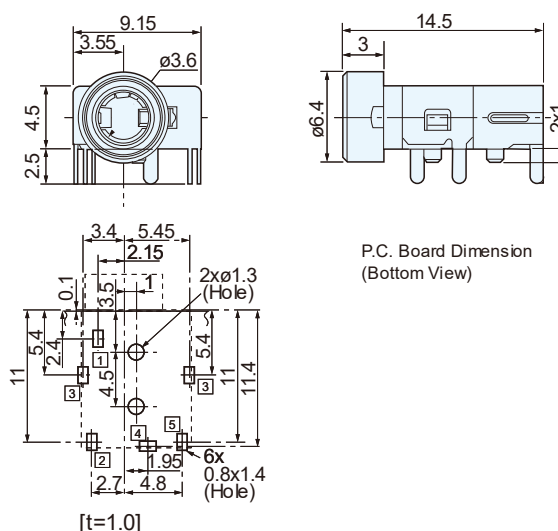
Flow Soldering



**LGS2318-0900F**

DIP Type

Circuit



Manual Soldering

# Mini Jacks

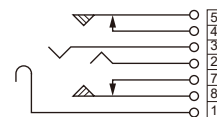
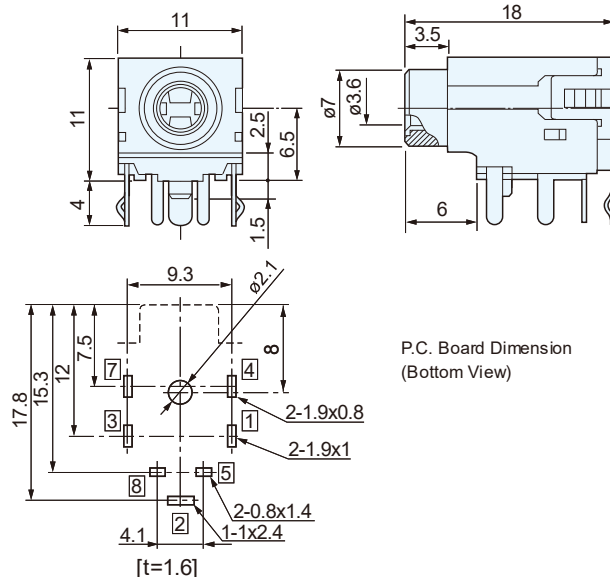
## 3.5mm Dia. Jack : JK-35 Series



**LGS6506-0700F**

DIP Type

Circuit



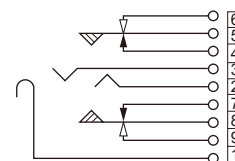
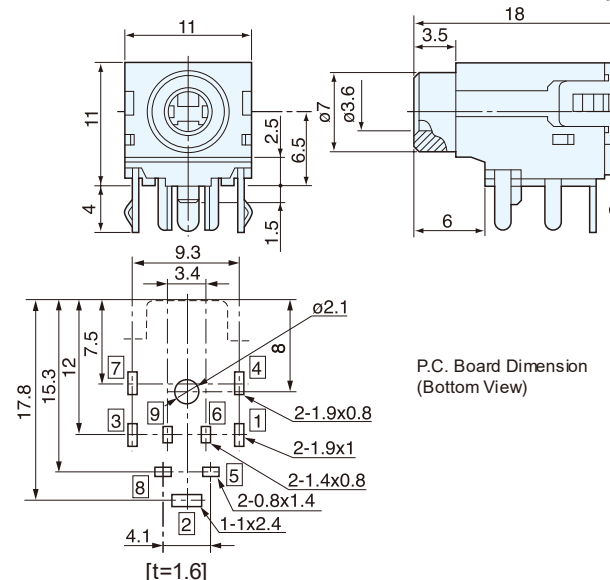
Flow Soldering



**LGS6507-1300F**

DIP Type

Circuit



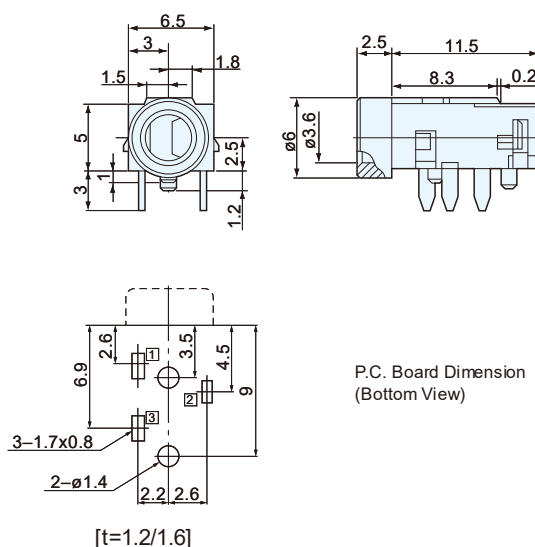
Flow Soldering



**LGY2502-0200F**

DIP Type

Circuit



Flow Soldering  
(Please contact about  
soldering condition)  
Manual Soldering

# Mini Jacks

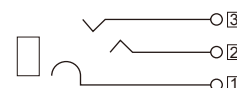
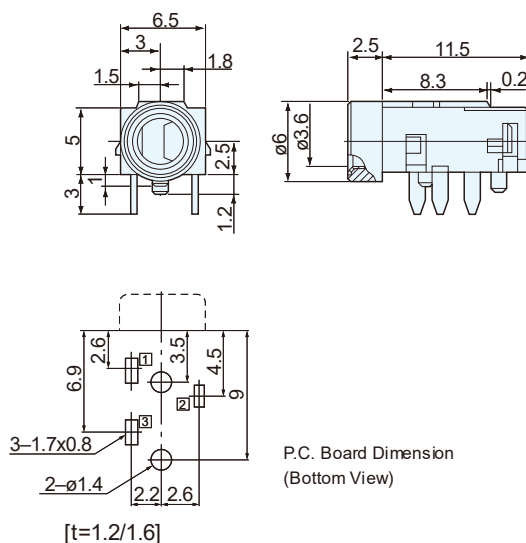
## 3.5mm Dia. Jack : JK-35 Series



**LGY2512-0100F**

DIP Type

Circuit



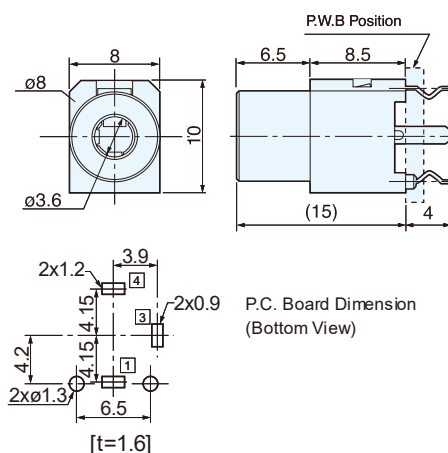
Flow Soldering  
(Please contact about  
soldering condition)  
Manual Soldering



**LGT8502-0200F**

DIP Type

Circuit



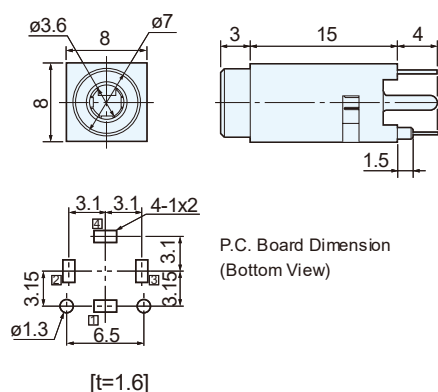
Flow Soldering  
Manual Soldering



**LGT1509-0200F**

DIP Type

Circuit



Flow Soldering  
Manual Soldering

# Mini Jacks

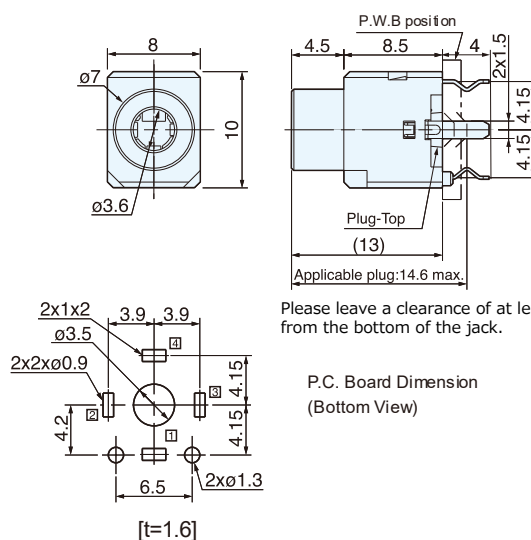
## 3.5mm Dia. Jack : JK-35 Series



**LGT8509-0300F**

DIP Type

Circuit



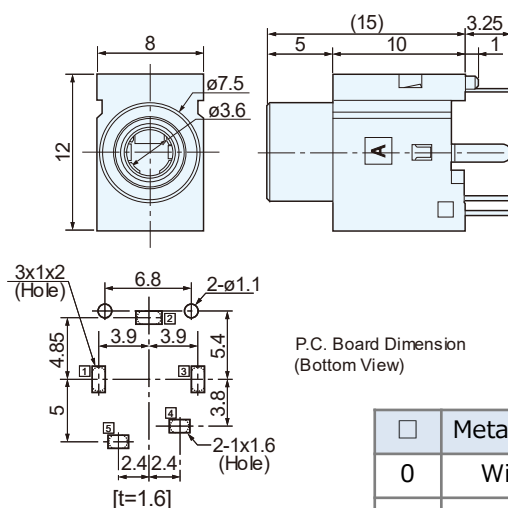
Manual Soldering



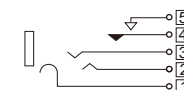
**LGM10 9-0100F**

DIP Type

Circuit



	Metal Sleeve
0	Without
1	With



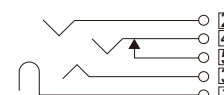
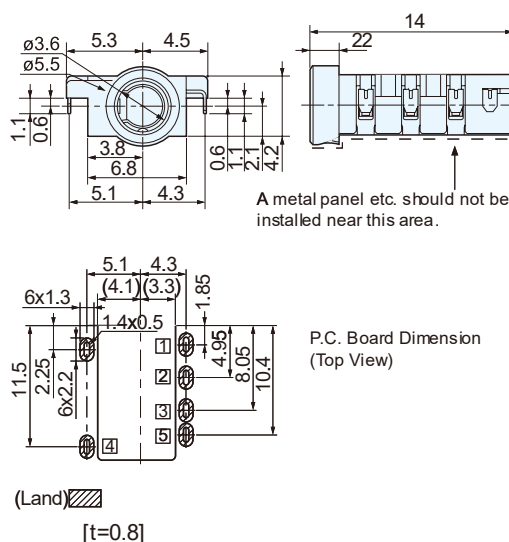
Manual Soldering



**LGY0609-0600F**

Mid Mount Type  
DIP Type

Circuit



Reflow Soldering  
Manual Soldering