

Interface Connectors

USB Type-C™ Receptacles

■ Features

1. Conforms to USB Type-C™ standard.
2. Conforms to USB-PD.
3. Supports 5Gbps(Gen1)/10Gbps(Gen2) high speed transmission.
4. Ensuring high mechanical strength.
5. Depth 7.6mm(Shield).
6. Reversible structure that plug can be fitted to front and back.
7. Correspond to various fixing methods by exchanging external frames.

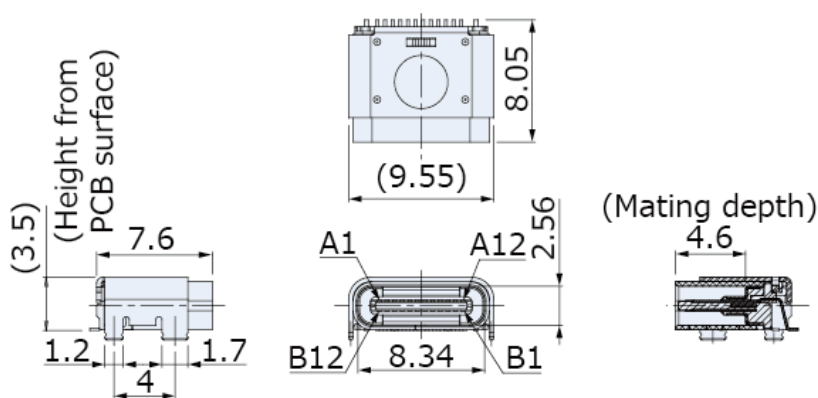
*For mid-mount type, vertical type, waterproof type, please contact us.

■ Specifications

- Number of Pins : 24
- Mounting Method : SMT
- Mounting Direction : Right Angle
- Rating : Vbus 5A, GND(Power return) 6.25A, Vconn 1.25A, Other 0.25A, 20V AC
- Contact Resistance : 40mΩ max.
- Insulation Resistance : 100MΩ min. at 100V DC
- Withstanding Voltage : 100V AC (for one minute)
- Operating Temperature Range : -30°C to +80°C
- Operating Life : 10000 cycles



CSS5324-3M11F



On Board